

# EMG7508 | EMG9008S

## 30" | 36" Perimeter Series

### Range Hoods

# FOTILE

A BREATH OF FRESH ENGINEERING®



## Main Features

### Capture Shield Technology

Optimizing with the Coanda Effect for accelerated and even smoke extraction, the range hood **covers 5-6 burners**, ensuring efficient ventilation in a quiet cooking environment.

### Motion Activation

Effortlessly control the range hood with a **simple wave**, offering convenience and a modern touch to your kitchen.

### Powerful DC Motor With 1200 Max Equiv. CFM\*

A rapid rotation speed of up to 100,000 revolutions per hour, outperforming traditional AC motors by **1.8 times** and refreshing your kitchen air in **under 40 seconds**.

### Integrated Oil Cup Design

Streamline cleaning with an integrated **capture shield** and oil cup. Enjoy hassle-free oil management that **prevents drips**, ensuring a cleaner, organized cooking space with extended cleaning frequencies for peace of mind.

### Delay Shutoff

This smart feature runs the range hood for 2 minutes post-cooking, ensuring **complete removal of lingering smoke or odors** for a fresh kitchen environment.



EMG7508 | EMG9008S

30" | 36" Perimeter Series

Range Hoods

Specifications



30" EMG7508



36" EMG9008S

Style and Design		
Material	Tempered Glass & Stainless Steel	
Color	Black	
Installation	Wall Mount	
Operation	Motion & Touch	
Screen Lock	Yes	
Delay Shutoff	2 min	
Illumination (W)	3W × 2 (LED)	5W × 1 (LED)
Grease Cup	Integrated with Capture Shield Plate	
Grease Filter	Removable & Dishwasher Safe	
Performance		
Motor	DC Motors	
Speed Setting	4	
Max Equiv. CFM*	1200	
Noise Level (dB)	37 / 46 / 53 / 57	
Grease Filtration Rate	95%	
Odor Reduction Rate	97%	
Technical Specs		
Wattage (W)	290	
Power Supply (V/Hz)	120V/60Hz	
Duct Size	Vertical Duct 6" Round	
Warranty Summary		
Labor	2 Years	
Parts	5 Years (Limited)	
Motor	Lifetime (Limited)	

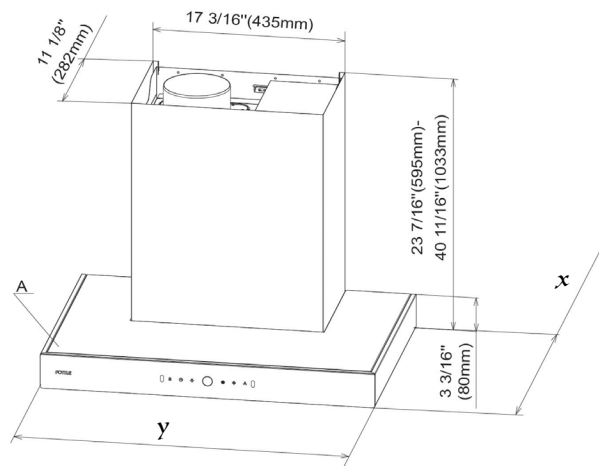
\*FOTILE Equivalent CFM is a higher CFM rating due to our Iterless technology that combines WhisPower Motors and Capture-Shield design. By utilizing this technology, FOTILE applies the Coanda Effect by accelerating smoke extraction and grease separation, and increasing our Capture Efficiency. This enables FOTILE to cover a larger cooktop surface (6 sq.ft.) and achieve a 95% oil filtration rate, and 97% odor reduction rate, keeping your kitchen smoke free and smelling fresh.

EMG7508 | EMG9008S

30" | 36" Perimeter Series

Range Hoods


Product Dimensions



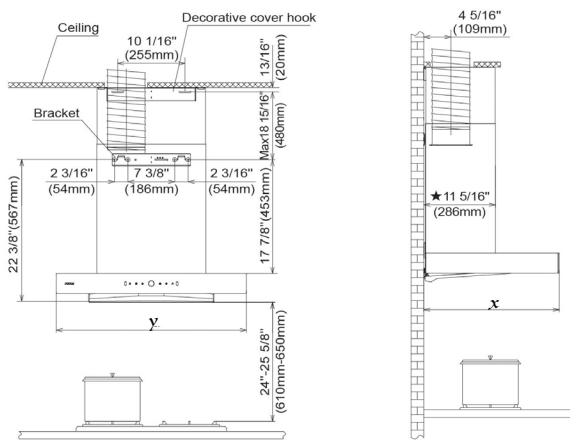
Product Basic Conditions

EMG7508: y=29 7/8"(758mm)      x=21 5/16"(540mm)  
EMG9008S: y=35 1/4"(895mm)      x=20 11/16"(525mm)

Dimension / Weight		
	EMG7508	EMG9008S
Overall Width (y)	29 7/8"	36"
Overall Height	23 7/16"- 40 11/16" (see accessories)	
Overall Depth (x)	21 5/16"	20 11/16"
Net Weight	60.4 lbs.	62.4 lbs.
Gross Weight	75 lbs.	78.9 lbs.

Accessories	
	Extension decorative cover for wall-mount installation, suitable for 8-10ft ceilings

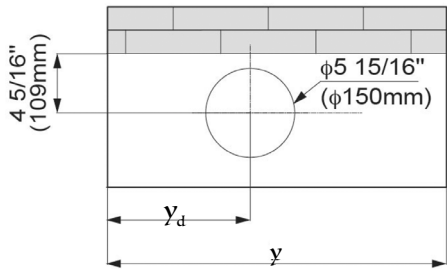
Installation Dimensions



Product installation and cabinet collocation figure diagram  
(★ is the distance from the wall)

EMG7508: y=29 7/8"(758mm)      x=21 5/16"(540mm)  
EMG9008S: y=35 1/4"(895mm)      x=20 11/16"(525mm)

Opening size of the top cupboard or ceiling:



EMG7508: y<sub>d</sub>=11"(279mm)      y=29 7/8"(758mm)  
EMG9008S: y<sub>d</sub>=13 11/16"(347.5mm)      y=35 1/4"(895mm)

The 30-inch EMG7508 and 36-inch EMG9008S differ in overall width, and also have slight variations in overall depth and duct positioning. y represents the overall width, x distance from the front of the unit to the wall, y<sub>d</sub> is the distance from the duct center to the far left edge of the unit.

The drawings on this page are schematic diagrams and may not in scale. Refer to the specified digits shown for accurate lengths.

Accessories: To purchase FOTILE accessories and parts, please visit us at [us.fotileglobal.com](http://us.fotileglobal.com) or call 1(888) 315-0366.

Notes: All height, width, and depth dimensions are shown in inches. Information is subject to change. Please refer to the FOTILE website for the most up-to-date information.

Warranties: Please see the user manual or FOTILE website for the statement of limited warranty.

For more information on our entire line of products: visit [us.fotileglobal.com](http://us.fotileglobal.com) or call 1(888) 315-0366.

©2025 FOTILE America LLC. All rights reserved. FOTILE is a registered trademark of FOTILE Group.